

Narratives of Responsibility in Science and Technology & RRI as shifting divisions of Moral Labour



Thoko Kamwendo
Research Fellow
University of Edinburgh

In this talk:

1. Narratives of Responsibility in Medicine & Nanotechnology
2. What's behind the notion of RRI and the idea of divisions of moral labour
3. Key points for the workshop



Engineering Life - ERC Funded project, University of Edinburgh

Collaboration with ERA CoBioTech:

Smith, R.D.J., Scott, D., Kamwendo, Z.T., Calvert, J. (2019) *An Agenda for Responsible Research and Innovation in ERA CoBioTech*. Swindon, UK: Biotechnology and Biological Sciences Research Council and ERA CoFund on Biotechnology.

Can be found here: <https://www.cobiotech.eu/about-cobiotech/strategic-research-agenda>

Jane Calvert

Rob Smith

Deborah Scott

Thoko Kamwendo



Responsibility in Medicine

Institutionalized in ethical procedures

Heavily influenced by notions of care

Weighted toward a responsibility for the individual

Responsibility in Nanotechnology

New and emerging field

Principle field for the development of RRI

Responsibility balanced with potential for the future

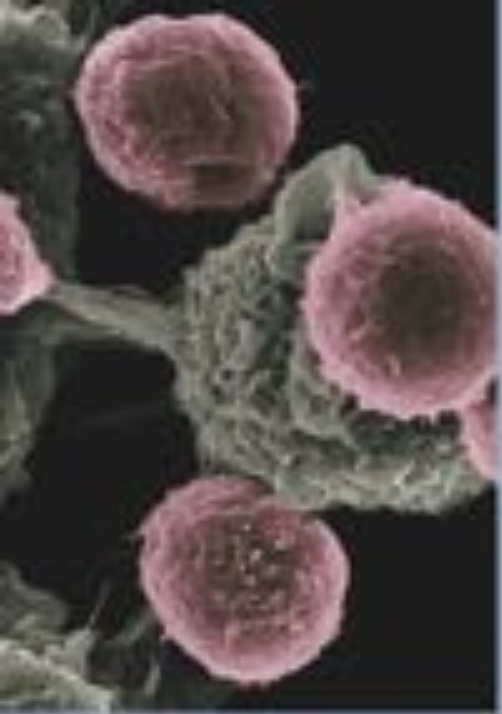


RRI and divisions of Moral Labour

- Still emerging – open ended
- Shifting and reworking ”divisions of moral labour”

Rip, A. (2014). The past and future of RRI. *Life Sciences, Society and Policy*, 10, 17.





Key points to keep in mind:

- Nanomedicine has potential to draw on multiple notions of responsibility
- Not just about minimizing adverse effects in the name of progress
- Think of RRI as an umbrella term for a constantly emerging set of activities with the goal of shifting the boundaries of moral labour

The background is a collage of scientific and biological images. On the left, there's a close-up of a microscope's objective lens and stage. On the right, a hand is shown holding a petri dish. The central area is filled with various microscopic views of cells, some showing internal organelles and others showing cell membranes. The overall color palette is dominated by blues, greys, and greens, with some pinkish-red highlights from the petri dish and certain cell structures.

Thank you